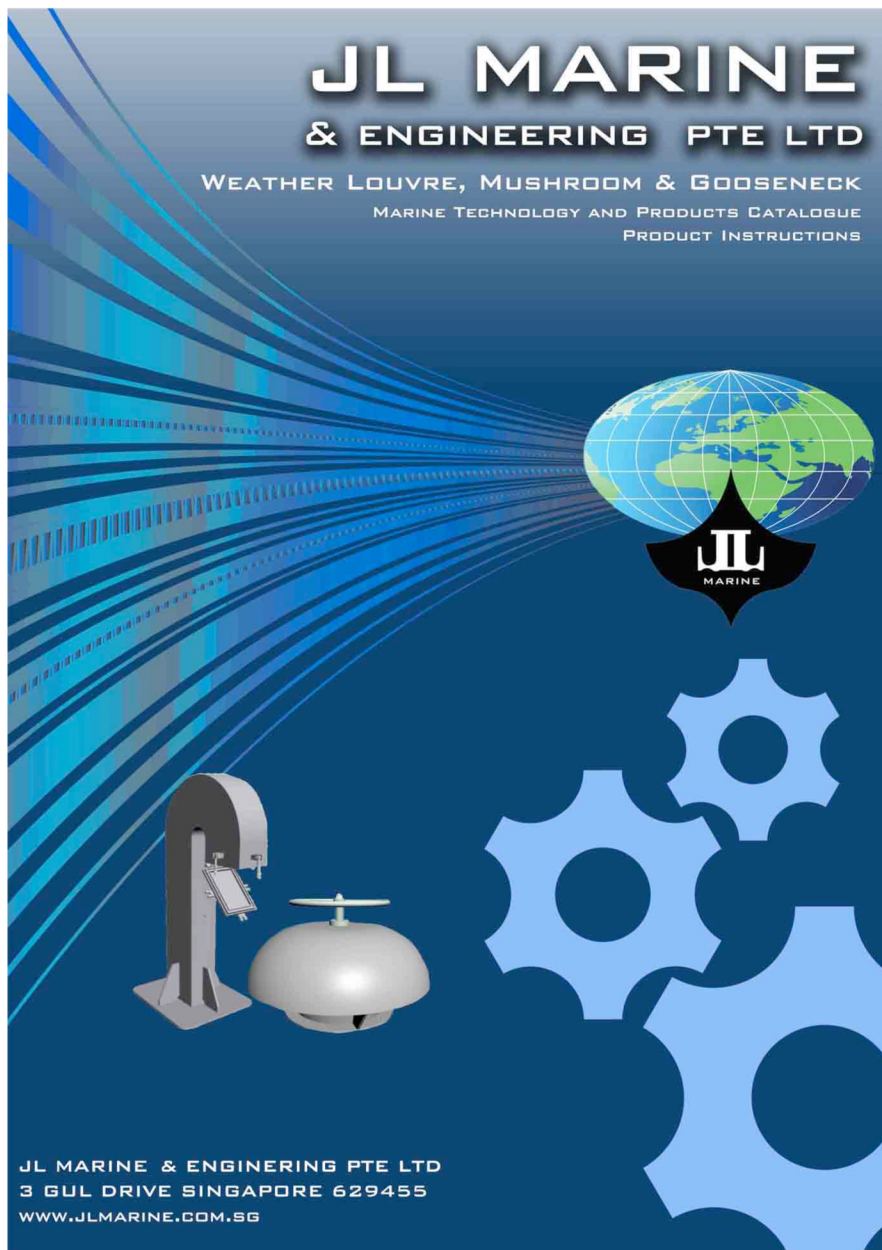




# JL Marine & Engineering Pte Ltd

## - Weather Louver, Mushroom & Gooseneck

Marine Technology and Products Catalogue  
Product Instructions



Owing to continued product development, JL reserves the right to introduce alterations without prior notice.

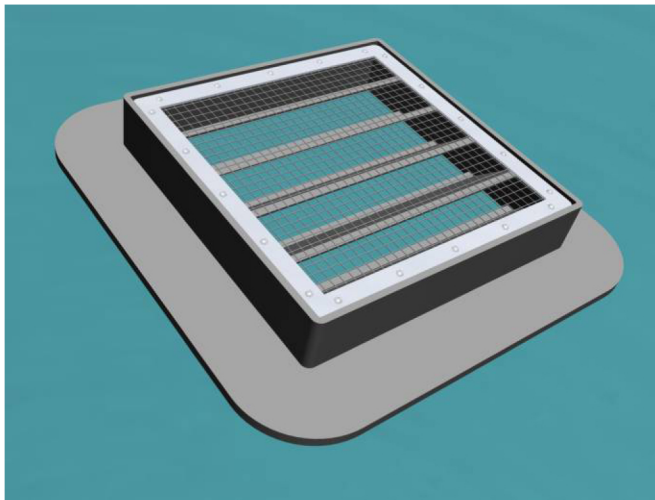
Document No: PI-02.20100503-1.SG

Owing to continued product development, JL reserves the right to introduce alterations without prior notice.

**INTRODUCTION**

## Weather Louver without Water Tight Cover

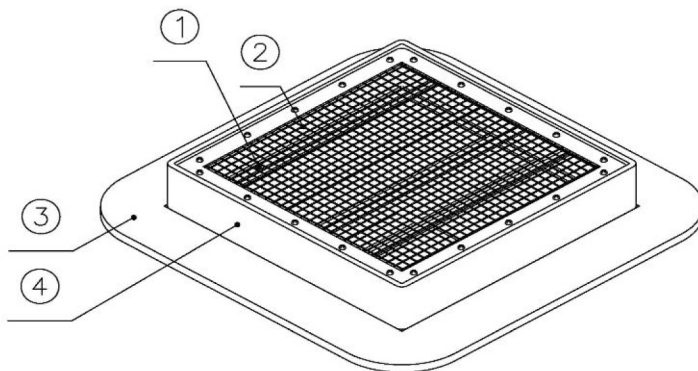
Model: WL



### Features

- Heavy-duty weather louvers for marine applications.
- WL is specially designed for mechanical ventilation system, such as fresh air inlet or exhaust air outlet application.
- Outside mounting on Bulkhead.
- Lower Pressure drop.
- Available in different sizes.

The weather louver consists basically of

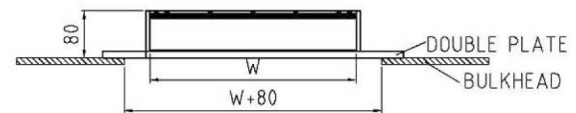


### Type Key

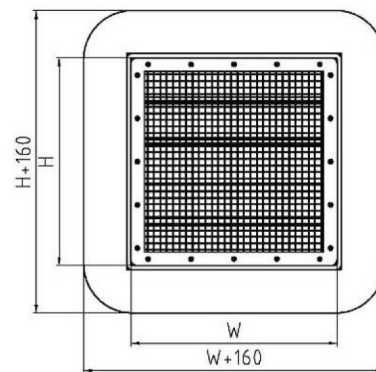
**WL (W x H)**

- WL--Series.
- (W x H) -- Width x Height.

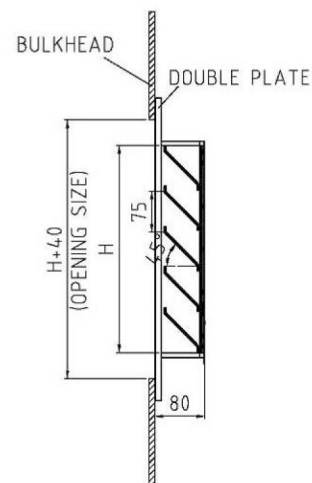
### Drawing



TOP VIEW



FRONT VIEW



SIDE VIEW

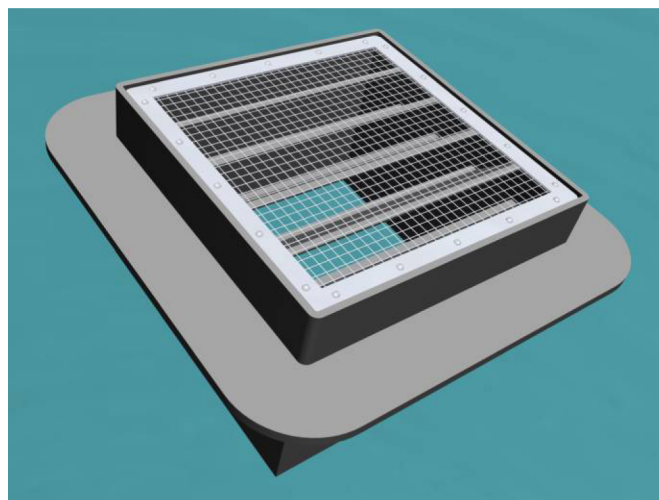
| No | Name         | Material | Qty   | Remark      |
|----|--------------|----------|-------|-------------|
| 1  | Lamella      | SS41     | 1     | T=3         |
| 2  | Bird Screen  | SUS304   | 1     | 12x12xga#16 |
| 3  | Double Plate | Q235**   | 1 Set | T=10*       |
| 4  | Body/Coaming | SS41**   | 1 Set | T=8*        |

\* Other thicknesses are available on request.

\*\* Other materials are available on request.

## Weather Louver without Water Tight Cover

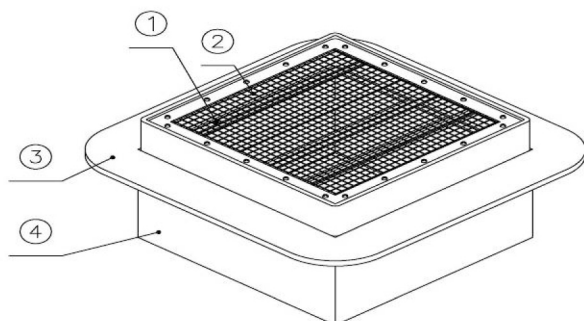
Model: WLP



### Features

- Heavy-duty weather louvers for marine applications.
- WLP is specially designed for mechanical ventilation system, such as fresh air inlet or exhaust air outlet application.
- Outside mounting on Bulkhead.
- Lower Pressure drop.
- Available in different sizes.

The weather louver consists basically of



| No | Name         | Material | Qty   | Remark      |
|----|--------------|----------|-------|-------------|
| 1  | Lamella      | SS41     | 1     | T=3         |
| 2  | Bird Screen  | SUS304   | 1     | 12x12xga#16 |
| 3  | Double Plate | Q235**   | 1 Set | T=10*       |
| 4  | Body/Coaming | Q235**   | 1 Set | T=8*        |

\* Other thicknesses are available on request.

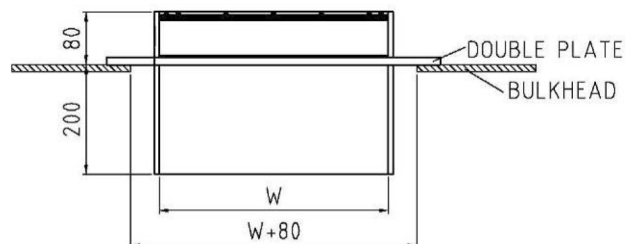
\*\* Other materials are available on request.

### Type Key

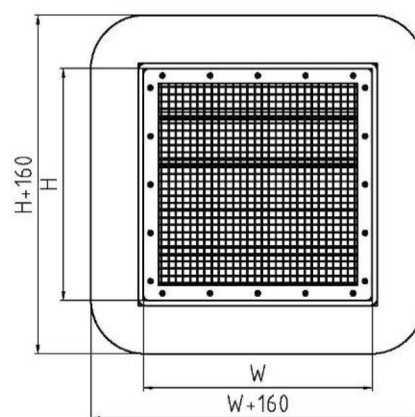
**WLP (W x H)**

- WLP--Series.
- (W x H) --Width x Height.

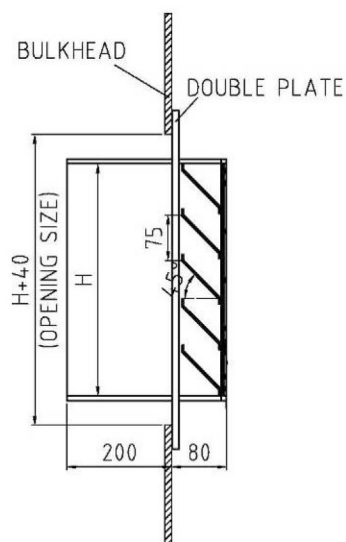
### Drawing



TOP VIEW



FRONT VIEW

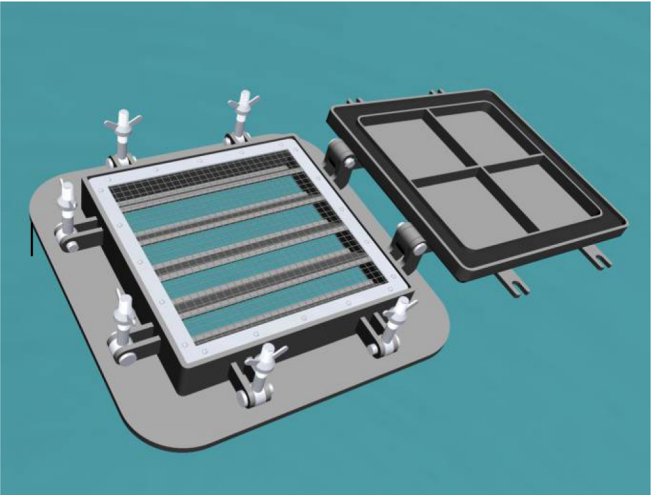


SIDE VIEW



Weather Louver Completed with Water Tight Cover

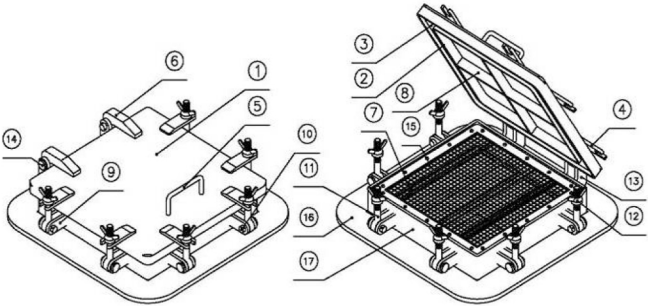
Model: WLC



Features

- Heavy-duty weather louvers for marine applications.
- WLC is specially designed for mechanical ventilation system, such as fresh air inlet or exhaust air outlet application.
- Outside mounting on Bulkhead.
- The louver is equipped with a hinged hatch with neoprene gasket and lock bolts with eye nuts. Top-, bottom- or side hinged.
- Lower Pressure drop.
- Available in different sizes.

The weather louver consists basically of



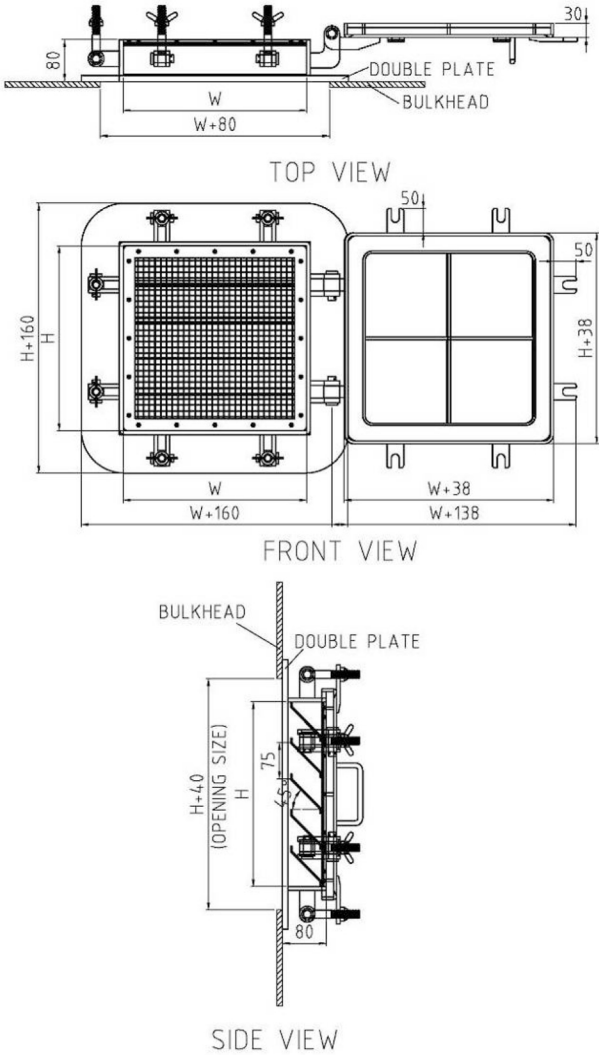
| No | Name              | Material | Qty   | Remark    |
|----|-------------------|----------|-------|-----------|
| 1  | Water tight cover | SS41     | 1     | T=6       |
| 2  | Gasket retainer   | SS41     | 1     | T=4       |
| 3  | Gasket            | Neoprene | 1 Set | 32x15t    |
| 4  | Tension Bracket   | SS41     | 1 Set | T=10      |
| 5  | Handle            | SS41     | 1     | RB12      |
| 6  | Hinge Blade       | SS41     | 1 Set | T=25      |
| 7  | Lamella           | SS41     | 1     | T=3       |
| 8  | Stiffener         | SS41     | 1     | F.B 30x6t |
| 9  | Ring Bolt Bracket | SS41     | 1 Set | T=8       |

|    |               |        |       |             |
|----|---------------|--------|-------|-------------|
| 10 | Hinge Pin     | SS41   | 1 Set | M16         |
| 11 | Ring Bolt     | Brass  | 1 Set | M16         |
| 12 | Butterfly Nut | Brass  | 1 Set | M16         |
| 13 | Hinge Support | SS41   | 1 Set | T=8         |
| 14 | Hinge pin     | SUS304 | 1 Set | Φ 16        |
| 15 | Bird Screen   | SUS304 | 1     | 12x12xga#16 |
| 16 | Double Plate  | Q235** | 1 Set | T=10*       |
| 17 | Body/Coaming  | SS41** | 1 Set | T=8*        |

\* Other thicknesses are available on request.

\*\* Other materials are available on request.

Drawing



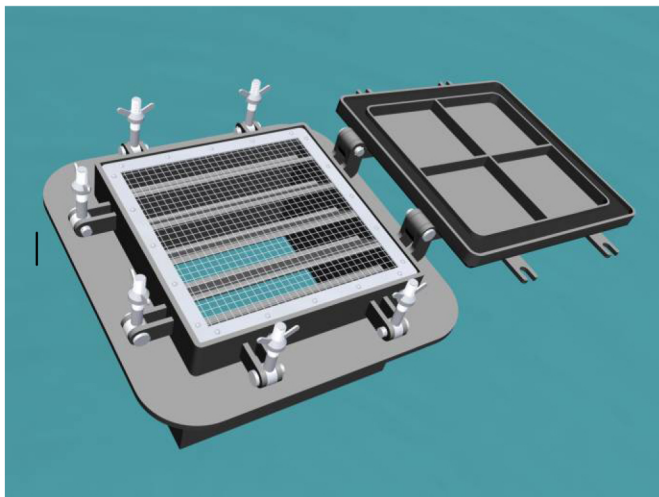
Type Key

WLC (W x H) -T/B/R/L

- WLCP--Series.
- (W x H) --Width x Height.
- T--Top open/ B--Bottom open/ R—Right open/ L—Left open.



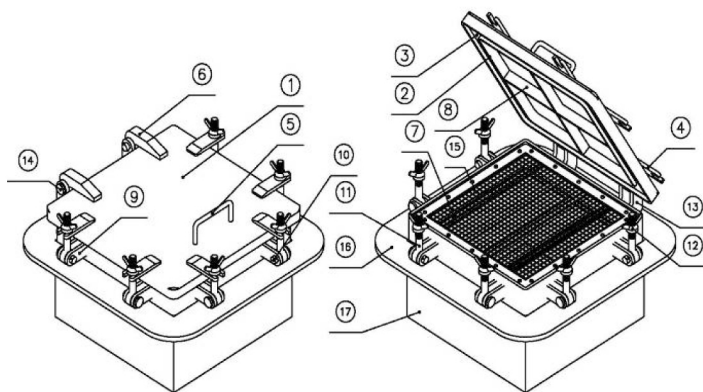
## Weather Louver Completed With Water Tight Cover. Model: WLCP



### Features

- Heavy-duty weather louvers for marine applications.
- WLCP is specially designed for mechanical ventilation system, such as fresh air inlet or exhaust air outlet application.
- Outside mounting on Bulkhead.
- The louver is equipped with a hinged hatch with neoprene gasket and lock bolts with eye nuts. Top-, bottom- or side hinged.
- Lower Pressure drop.
- Available in different sizes.

The weather louver consists basically of

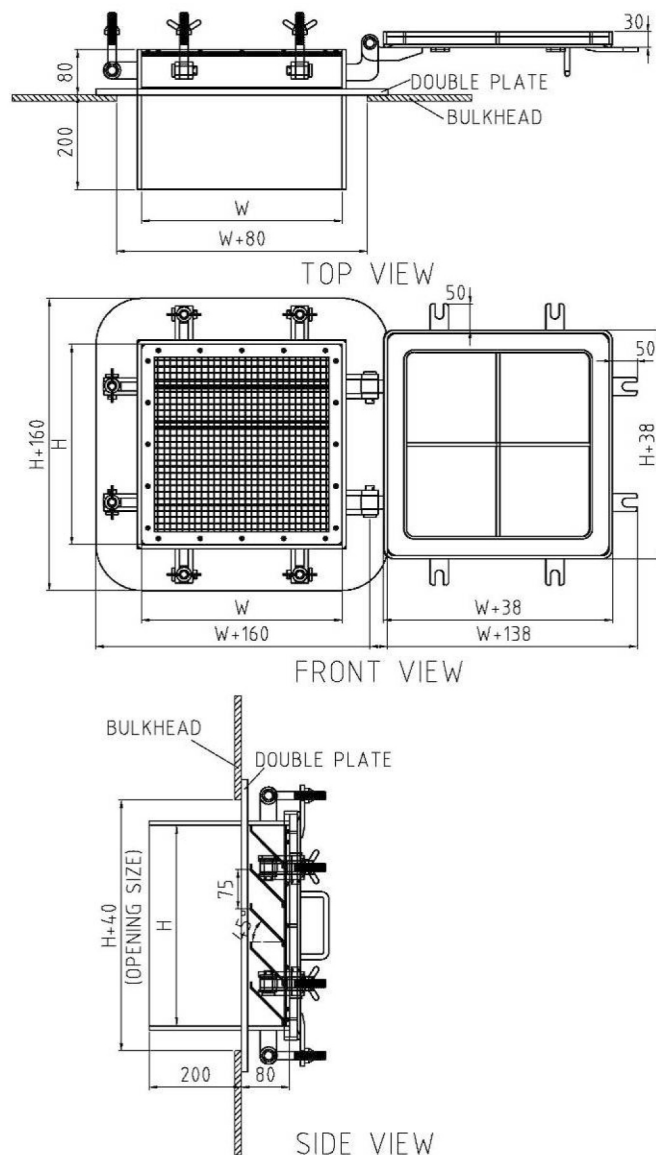


|    |               |        |       |             |
|----|---------------|--------|-------|-------------|
| 11 | Ring Bolt     | Brass  | 1 Set | M16         |
| 12 | Butterfly Nut | Brass  | 1 Set | M16         |
| 13 | Hinge Support | SS41   | 1 Set | T=8         |
| 14 | Hinge pin     | SUS304 | 1 Set | Φ 16        |
| 15 | Bird Screen   | SUS304 | 1     | 12x12xga#16 |
| 16 | Double Plate  | Q235** | 1 Set | T=10*       |
| 17 | Body/Coaming  | SS41** | 1 Set | T=8*        |

\* Other thicknesses are available on request.

\*\* Other materials are available on request.

### Drawing



### Type Key

#### WLCP (W x H) –T/B/R/L

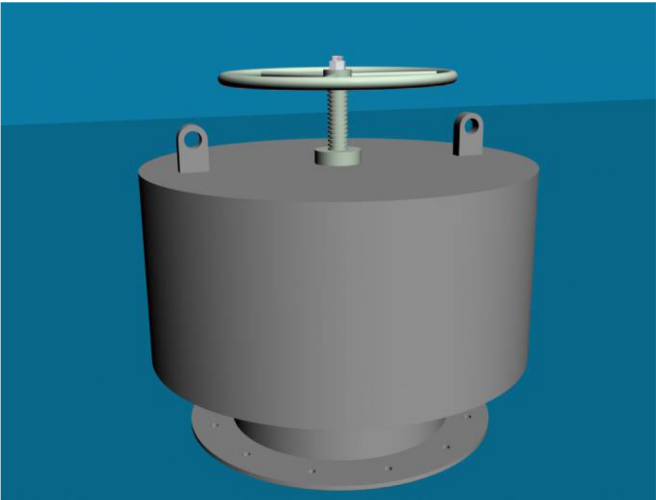
- WLCP--Series.
- (W x H)--Width x Height.
- T--Top open/B--Bottom open/R--Right open/  
L--Left open.

| No | Name              | Material | Qty   | Remark    |
|----|-------------------|----------|-------|-----------|
| 1  | Water tight cover | SS41     | 1     | T=6       |
| 2  | Gasket retainer   | SS41     | 1     | T=4       |
| 3  | Gasket            | Neoprene | 1 Set | 32x15t    |
| 4  | Tension Bracket   | SS41     | 1 Set | T=10      |
| 5  | Handle            | SS41     | 1     | RB12      |
| 6  | Hinge Blade       | SS41     | 1 Set | T=25      |
| 7  | Lamella           | SS41     | 1     | T=3       |
| 8  | Stiffener         | SS41     | 1     | F.B 30x6t |
| 9  | Ring Bolt Bracket | SS41     | 1 Set | T=8       |
| 10 | Hinge Pin         | SS41     | 1 Set | M16       |

Owing to continued product development, JL reserves the right to introduce alterations without prior notice.

# Mushroom Air Vent

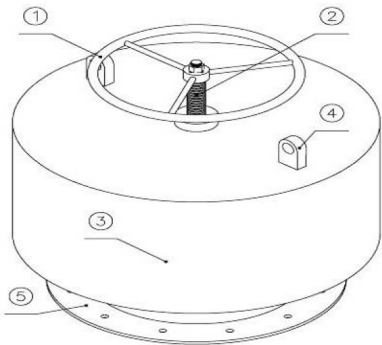
Model: MVR



## Features

- Heavy-duty mushroom vent for marine applications.
- MVR is specially designed for mechanical ventilation system, such as fresh air inlet or exhaust air outlet application.
- Water-tight proof.
- Outside mounting on deck.
- Lower Pressure drop.
- Available in different sizes.

The mushroom consists basically of



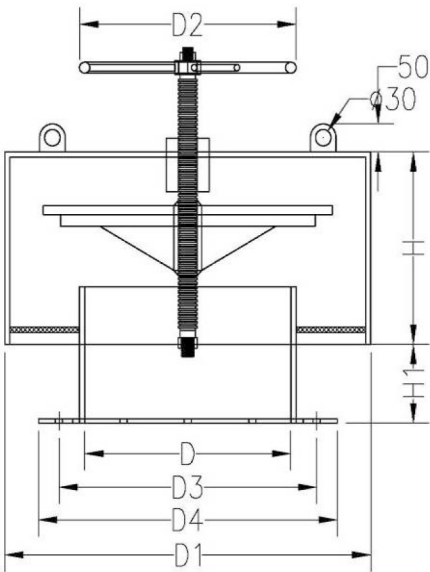
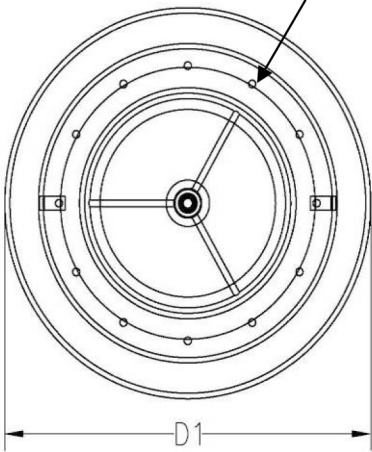
| No | Name             | Material | Qty   | Remark                      |
|----|------------------|----------|-------|-----------------------------|
| 1  | Cast handle      | SS41     | 1     | Φ 20 Rod                    |
| 2  | Long screw       | SQ       | 1     | Φ 29                        |
| 3  | Mushroom cowling | SS41**   | 1     | T=6*(D≤450)<br>T=8*(D>450)  |
| 4  | Hanging hole     | Q235**   | 1 Set | T=10*                       |
| 5  | Flange           | Q235**   | 1     | T=8*(D≤450)<br>T=10*(D>450) |

\* Other thicknesses are available on request.

\*\* Other materials are available on request.

## Drawing

‘E’ NO OF ‘ Φ ’ DIA HOLES  
EQUI-SPACED ON ‘D3’ P.C.D OFF CTRS



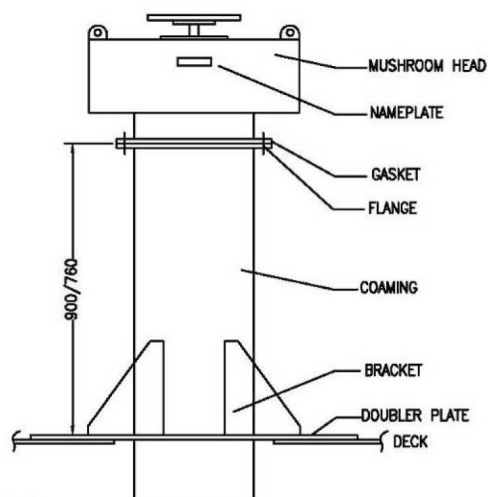
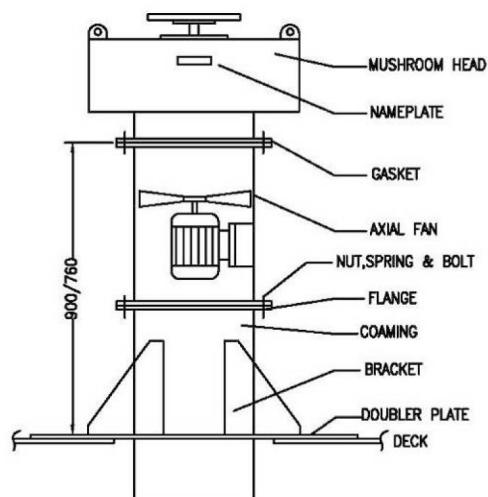
## Dimension Table

| Model  | D   | D1   | D2  | H   | H1  |
|--------|-----|------|-----|-----|-----|
| MVR160 | 160 | 380  | 80  | 130 | 90  |
| MVR200 | 200 | 400  | 80  | 130 | 90  |
| MVR250 | 250 | 500  | 120 | 180 | 121 |
| MVR315 | 315 | 600  | 120 | 180 | 121 |
| MVR355 | 355 | 700  | 280 | 200 | 130 |
| MVR400 | 400 | 780  | 280 | 233 | 130 |
| MVR450 | 450 | 880  | 320 | 248 | 140 |
| MVR500 | 500 | 980  | 320 | 277 | 170 |
| MVR560 | 560 | 1040 | 320 | 300 | 170 |
| MVR630 | 630 | 1100 | 320 | 300 | 180 |
| MVR710 | 710 | 1220 | 320 | 360 | 180 |
| MVR800 | 800 | 1410 | 320 | 400 | 200 |
| MVR900 | 900 | 1580 | 360 | 400 | 200 |

## Installation Data Table

| Model  | D   | D3  | D4   | E  | Φ  | Weight(kg) |
|--------|-----|-----|------|----|----|------------|
| MVR160 | 160 | 200 | 240  | 4  | 10 |            |
| MVR200 | 200 | 240 | 280  | 8  | 10 |            |
| MVR250 | 250 | 290 | 330  | 8  | 10 |            |
| MVR315 | 315 | 355 | 400  | 8  | 12 |            |
| MVR355 | 355 | 400 | 435  | 8  | 12 |            |
| MVR400 | 400 | 450 | 490  | 8  | 12 |            |
| MVR450 | 450 | 500 | 540  | 8  | 12 |            |
| MVR500 | 500 | 560 | 608  | 12 | 12 |            |
| MVR560 | 560 | 620 | 670  | 12 | 12 |            |
| MVR630 | 630 | 690 | 740  | 12 | 12 |            |
| MVR710 | 710 | 770 | 814  | 16 | 12 |            |
| MVR800 | 800 | 860 | 910  | 16 | 12 |            |
| MVR900 | 900 | 970 | 1016 | 16 | 15 |            |

## Installation Typical Drawing



### NOTE:

1. ALL BOLTS, NUTS AND WASHERS TO BE GALVANIZED.
2. ALL WELDING WIDTH TO BE MORE THAN  $\frac{5}{8}$  UNLESS SPECIFIED.
3. ALL FABRICATION PIECES TO BE SAND BLASTED AND PAINTED WITH ANTI-CORROSION PRIMER.

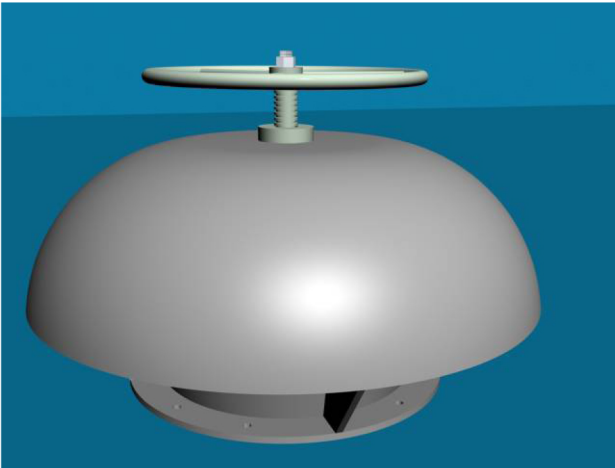
Owing to continued product development, JL reserves the right to introduce alterations without prior notice.

## INTRODUCTION



Mushroom Air Vent

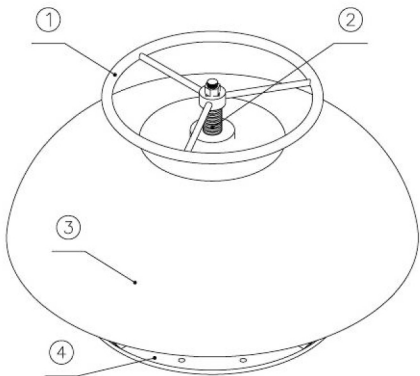
Model: MVL



Features

- Heavy-duty mushroom vent for marine applications.
- MVL is specially designed for mechanical ventilation system, such as fresh air inlet or exhaust air outlet application.
- Water-tight proof.
- Outside mounting on deck.
- Lower Pressure drop.
- Available in different sizes.

The mushroom consists basically of



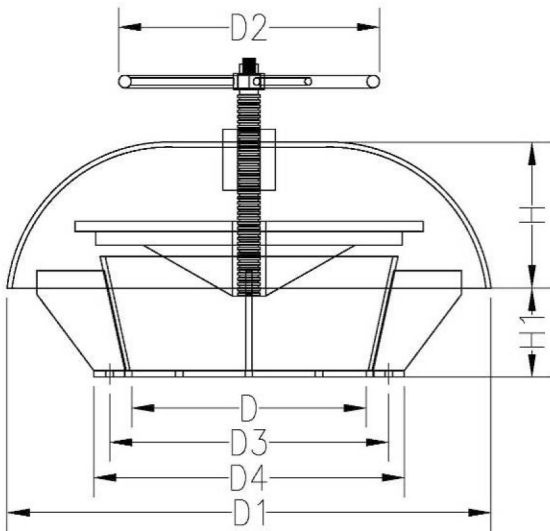
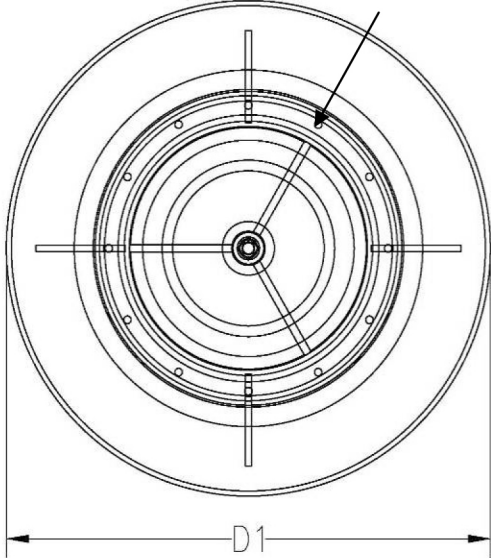
| No | Name             | Material | Qty | Remark                      |
|----|------------------|----------|-----|-----------------------------|
| 1  | Cast handle      | SS41     | 1   | Φ 20 Rod                    |
| 2  | Long screw       | SQ       | 1   | Φ 29                        |
| 3  | Mushroom cowling | SS41**   | 1   | T=6*(D≤450)<br>T=8*(D>450)  |
| 4  | Flange           | Q235**   | 1   | T=8*(D≤450)<br>T=10*(D>450) |

\* Other thicknesses are available on request.

\*\* Other materials are available on request.

Drawing

‘E’ NO OF ‘ Φ ’ DIA HOLES  
EQUI-SPACED ON ‘D3’ P.C.D OFF CTRS

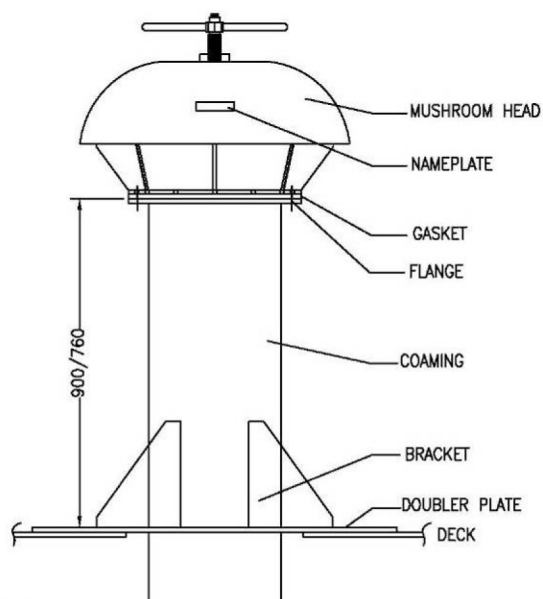
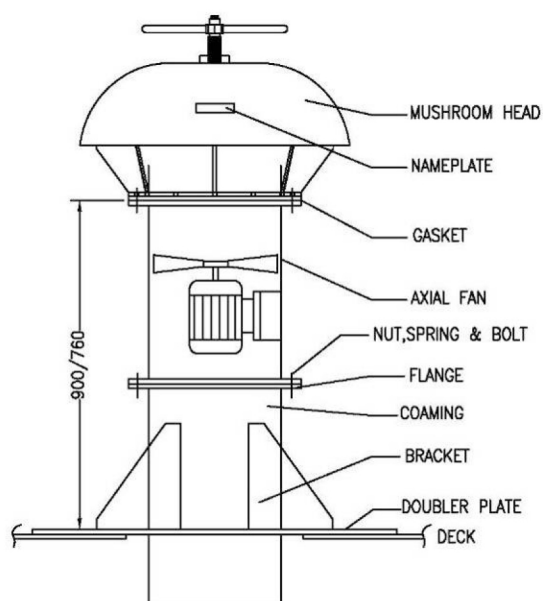


Dimension Table

| Model  | D   | D1   | D2  | H   | H1  |
|--------|-----|------|-----|-----|-----|
| MVL160 | 160 | 300  | 80  | 225 | 120 |
| MVL200 | 200 | 400  | 80  | 250 | 150 |
| MVL250 | 250 | 500  | 120 | 275 | 200 |
| MVL315 | 315 | 600  | 120 | 300 | 200 |
| MVL355 | 355 | 700  | 280 | 325 | 200 |
| MVL400 | 400 | 780  | 280 | 350 | 250 |
| MVL450 | 450 | 900  | 320 | 375 | 250 |
| MVL500 | 550 | 980  | 320 | 405 | 250 |
| MVL560 | 560 | 1080 | 320 | 435 | 300 |
| MVL630 | 630 | 1160 | 320 | 470 | 300 |
| MVL710 | 710 | 1320 | 320 | 520 | 300 |

**Installation Data Table**

| Model  | D   | D3  | D4  | E  | Φ  | Weight(kg) |
|--------|-----|-----|-----|----|----|------------|
| MVL160 | 160 | 200 | 240 | 4  | 10 |            |
| MVL200 | 200 | 240 | 280 | 8  | 10 |            |
| MVL250 | 250 | 290 | 330 | 8  | 10 |            |
| MVL315 | 315 | 355 | 400 | 8  | 12 |            |
| MVL355 | 355 | 400 | 435 | 8  | 12 |            |
| MVL400 | 400 | 450 | 490 | 8  | 12 |            |
| MVL450 | 450 | 500 | 540 | 8  | 12 |            |
| MVL500 | 500 | 560 | 608 | 12 | 12 |            |
| MVL560 | 560 | 620 | 670 | 12 | 12 |            |
| MVL630 | 630 | 690 | 740 | 12 | 12 |            |
| MVL710 | 710 | 770 | 814 | 16 | 12 |            |

**Installation Typical Drawing**


NOTE:

1. ALL BOLTS, NUTS AND WASHERS TO BE GAVANIZED.
2. ALL WELDING WIDTH TO BE MORE THAN  $\frac{3}{8}$  UNLESS SPECIFIE
3. ALL FABRCATION PIECES TO BE SAND BLASTED AND PAINTED WITH ANTI-CORROSION PRIMER.

Owing to continued product development, JL reserves the right to introduce alterations without prior notice.

Gooseneck Air Vent

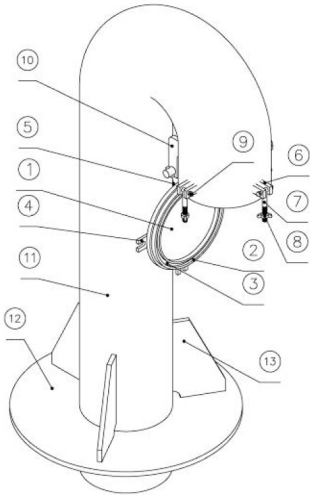
Model: GNR



Features

- Heavy-duty gooseneck for marine applications.
- GNR is specially designed for mechanical ventilation system, such as fresh air inlet or exhaust air outlet application.
- Outside mounting on deck.
- The gooseneck is equipped with a hinged hatch with neoprene gasket and lock bolts with eye nuts.
- Lower Pressure drop.
- Available in different sizes.

The gooseneck consists basically of

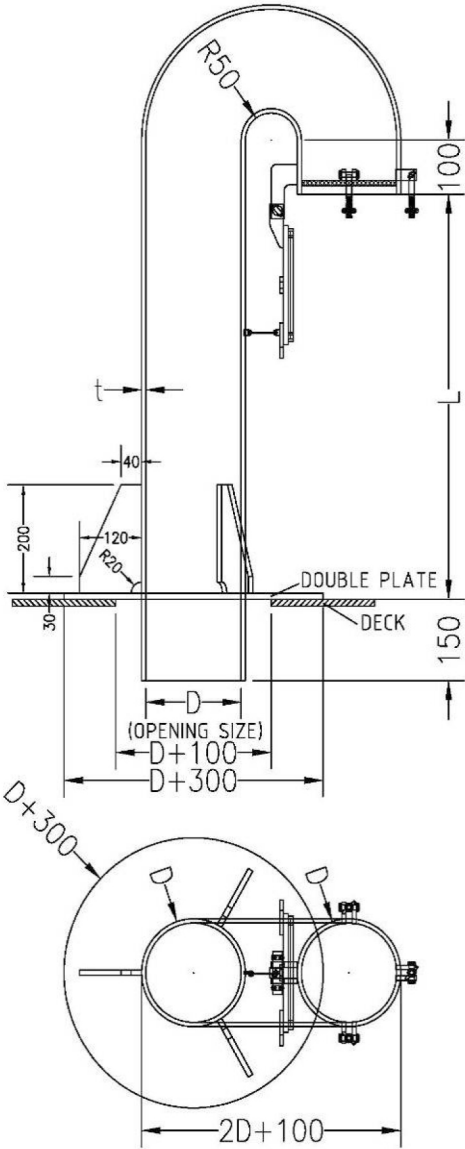


| No | Name              | Material | Qty   | Remark |
|----|-------------------|----------|-------|--------|
| 1  | Water tight cover | SS41     | 1     | T=6    |
| 2  | Gasket retainer   | SS41     | 1     | T=4.5  |
| 3  | Gasket            | Neoprene | 1 Set | 32x15t |
| 4  | Tension Bracket   | SS41     | 1 Set | T=8    |
| 5  | Hinge Blade       | SS41     | 1 Set | T=25   |
| 6  | Ring Bolt Bracket | SS41     | 1 Set | T=8    |
| 7  | Ring Bolt         | Brass    | 1 Set | M16    |
| 8  | Butterfly Nut     | Brass    | 1 Set | M16    |
| 9  | Hinge Pin         | SS41     | 1 Set | M16    |

|    |               |        |       |         |
|----|---------------|--------|-------|---------|
| 10 | Hinge Support | SS41   | 1 Set | T=8     |
| 11 | Coaming       | SS41** | 1     | T>=7.5* |
| 12 | Double Plate  | Q235** | 1     | T=12*   |
| 13 | Bracket       | Q235** | 3     | T=12*   |

- \* Other thicknesses are available on request.
- \*\* Other materials are available on request.

Drawing



Dimension Table

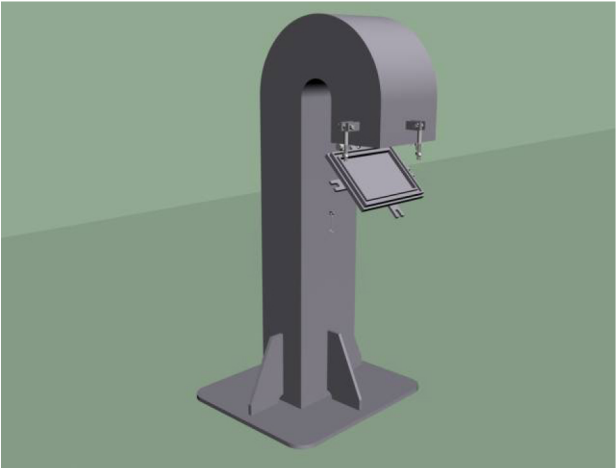
| Model  | D   | L       | t   | Weight |
|--------|-----|---------|-----|--------|
| GNR100 | 100 | 760/900 | 7.5 |        |
| GNR150 | 150 | 760/900 | 7.5 |        |
| GNR200 | 200 | 760/900 | 7.5 |        |
| GNR250 | 250 | 760/900 | 8   |        |
| GNR300 | 300 | 760/900 | 8.5 |        |
| GNR350 | 350 | 760/900 | 9   |        |
| GNR400 | 400 | 760/900 | 9.5 |        |

Owing to continued product development, JL reserves the right to introduce alterations without prior notice.



Gooseneck Air Vent

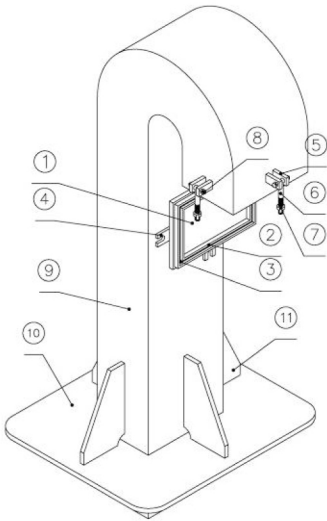
Model: GNA



Features

- Heavy-duty gooseneck for marine applications.
- GNA is specially designed for mechanical ventilation system, such as fresh air inlet or exhaust air outlet application.
- Outside mounting on deck.
- The gooseneck is equipped with a hinged hatch with neoprene gasket and lock bolts with eye nuts.
- Lower Pressure drop.
- Available in different sizes.

The gooseneck consists basically of

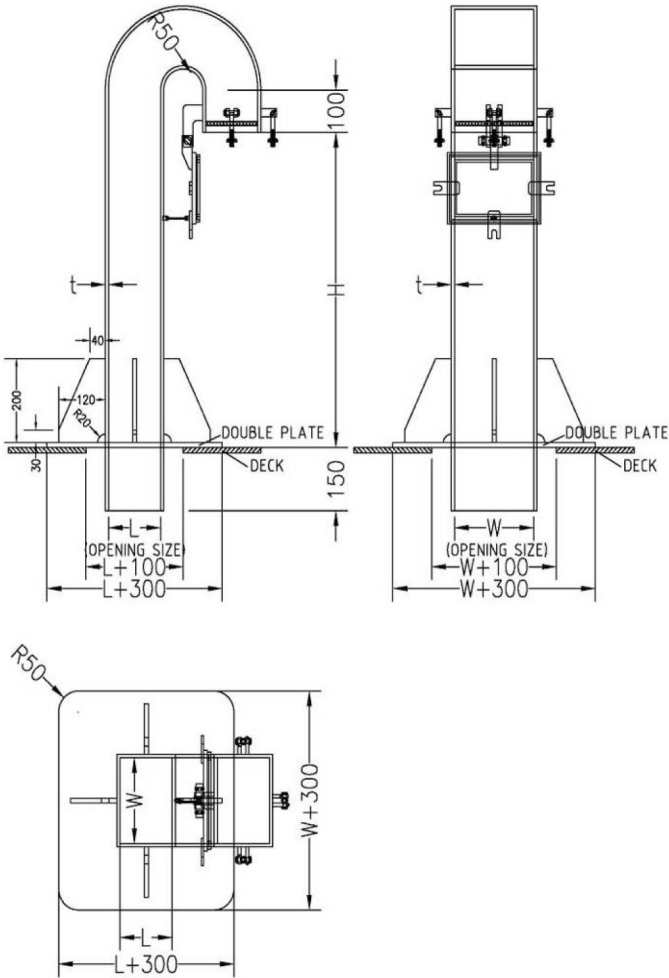


| No | Name              | Material | Qty   | Remark |
|----|-------------------|----------|-------|--------|
| 1  | Water tight cover | SS41     | 1     | T=6    |
| 2  | Gasket retainer   | SS41     | 1     | T=4.5  |
| 3  | Gasket            | Neoprene | 1 Set | 32x15t |
| 4  | Tension Bracket   | SS41     | 1 Set | T=8    |
| 5  | Ring Bolt Bracket | SS41     | 1 Set | T=8    |
| 6  | Ring Bolt         | Brass    | 1 Set | M16    |
| 7  | Butterfly Nut     | Brass    | 1 Set | M16    |
| 8  | Hinge Pin         | SS41     | 1 Set | M16    |

|    |              |        |   |         |
|----|--------------|--------|---|---------|
| 9  | Coaming      | SS41** | 1 | T>=7.5* |
| 10 | Double Plate | Q235** | 1 | T=12*   |
| 11 | Bracket      | Q235** | 3 | T=12*   |

- \* Other thicknesses are available on request.
- \*\* Other materials are available on request.

Drawing



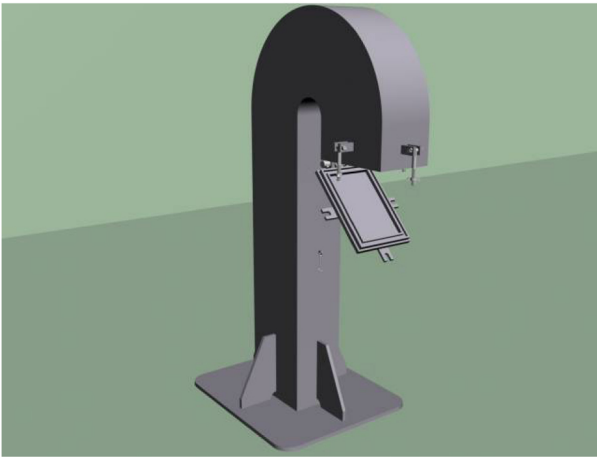
Dimension Table

| Model  | DN  | LXW     | H       | t   | Weight |
|--------|-----|---------|---------|-----|--------|
| GNA100 | 100 | 80X120  | 760/900 | 7.5 |        |
| GNA150 | 150 | 120X150 | 760/900 | 7.5 |        |
| GNA200 | 200 | 150X220 | 760/900 | 7.5 |        |
| GNA250 | 250 | 190X280 | 760/900 | 8   |        |
| GNA300 | 300 | 240X300 | 760/900 | 8.5 |        |
| GNA350 | 350 | 290X360 | 760/900 | 9   |        |
| GNA400 | 400 | 290X460 | 760/900 | 9.5 |        |

Owing to continued product development, JL reserves the right to introduce alterations without prior notice.

Gooseneck Air Vent

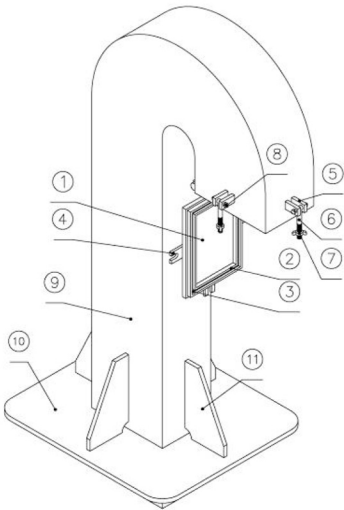
Model: GNB



- Features

  - Heavy-duty gooseneck for marine applications.
  - GNB is specially designed for mechanical ventilation system, such as fresh air inlet or exhaust air outlet application.
  - Outside mounting on deck.
  - The gooseneck is equipped with a hinged hatch with neoprene gasket and lock bolts with eye nuts.
  - Lower Pressure drop.
  - Available in different sizes.

The gooseneck consists basically of



| No | Name              | Material | Qty   | Remark  |
|----|-------------------|----------|-------|---------|
| 1  | Water tight cover | SS41     | 1     | T=6     |
| 2  | Gasket retainer   | SS41     | 1     | T=4.5   |
| 3  | Gasket            | Neoprene | 1 Set | 32x15t  |
| 4  | Tension Bracket   | SS41     | 1 Set | T=8     |
| 5  | Ring Bolt Bracket | SS41     | 1 Set | T=8     |
| 6  | Ring Bolt         | Brass    | 1 Set | M16     |
| 7  | Butterfly Nut     | Brass    | 1 Set | M16     |
| 8  | Hinge Pin         | SS41     | 1 Set | M16     |
| 9  | Coaming           | SS41**   | 1     | T>=7.5* |
| 10 | Double Plate      | Q235**   | 1     | T=12*   |

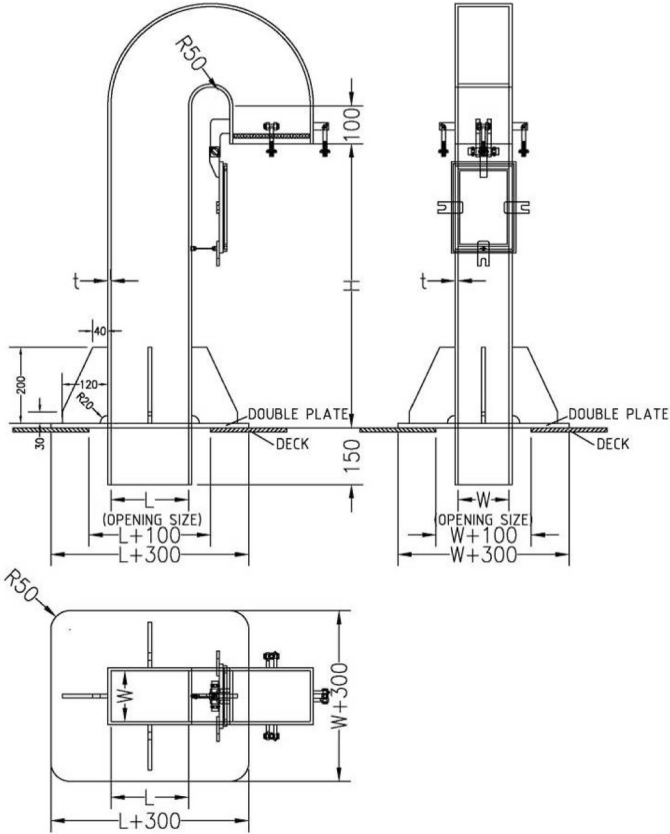
|    |         |        |   |       |
|----|---------|--------|---|-------|
| 11 | Bracket | Q235** | 3 | T=12* |
|----|---------|--------|---|-------|

- \*

Other thicknesses are available on request.
- \*\*

Other materials are available on request.

Drawing



Dimension Table

| Model  | DN  | LXW     | H       | t   | Weight |
|--------|-----|---------|---------|-----|--------|
| GNA100 | 100 | 120X80  | 760/900 | 7.5 |        |
| GNR150 | 150 | 150X120 | 760/900 | 7.5 |        |
| GNR200 | 200 | 220X150 | 760/900 | 7.5 |        |
| GNR250 | 250 | 280X190 | 760/900 | 8   |        |
| GNR300 | 300 | 300X240 | 760/900 | 8.5 |        |
| GNR350 | 350 | 360X290 | 760/900 | 9   |        |
| GNR400 | 400 | 460X290 | 760/900 | 9.5 |        |